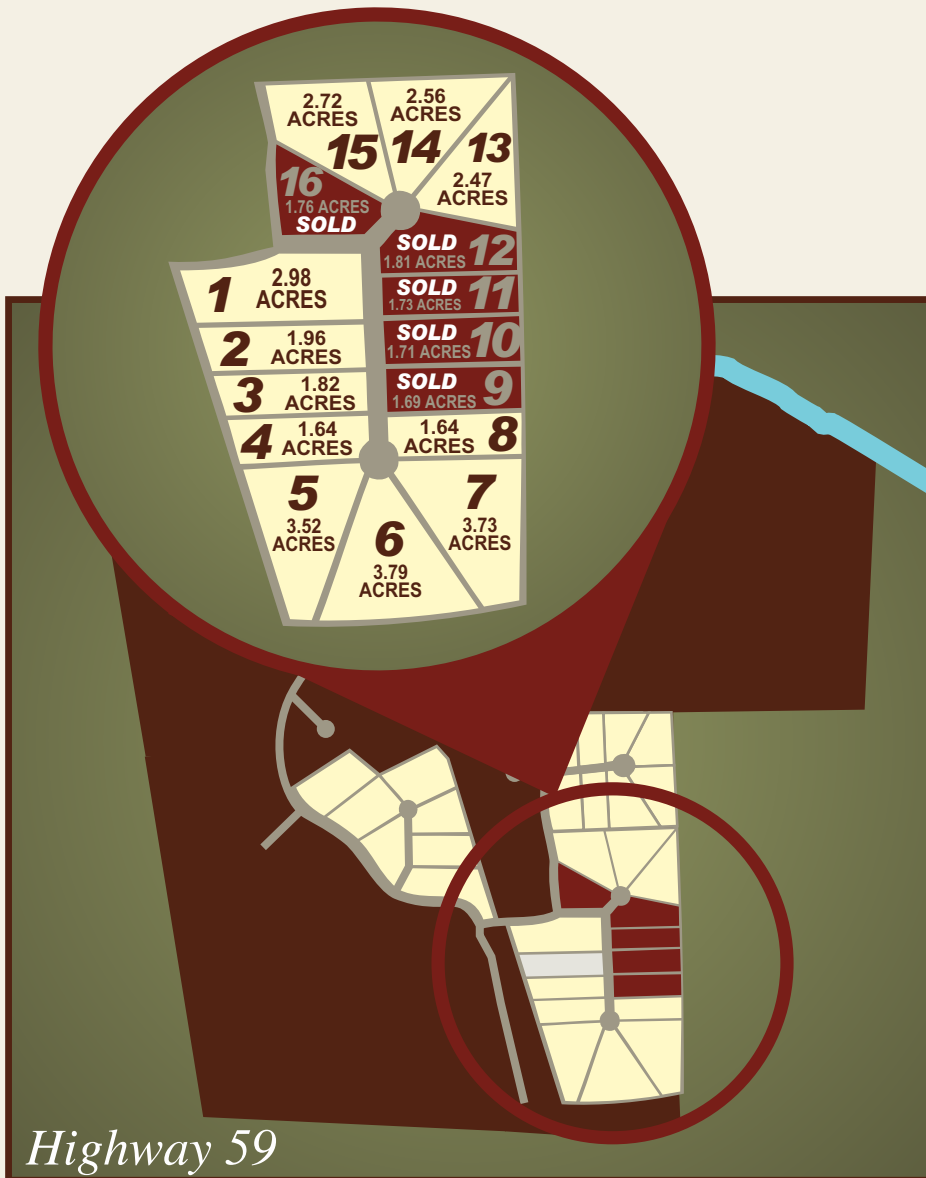


# POST OAK

## ESTATES

*The Bend at Post Oak*  
**PHASE II, BLOCK 1**



LOT	ACREAGE	PRICE
1	2.98	\$104,900
2	1.96	\$68,900
3	1.82	\$64,900
4	1.64	\$58,900
5	3.52	\$125,900
6	3.79	\$134,900
7	3.73	\$132,900
8	1.64	\$58,900
9	1.69	<b>SOLD</b>
10	1.71	<b>SOLD</b>
11	1.73	<b>SOLD</b>
12	1.81	<b>SOLD</b>
13	2.47	\$87,900
14	2.56	\$90,900
15	2.72	\$96,900
16	1.76	<b>SOLD</b>